

SAFETY INFORMATION

NOT A TOY. ADULT SUPERVISION REQUIRED

- MISUSE OR CARELESS USE MAY CAUSE INJURY OR DEATH
- THE RANGE OF THIS CROSSBOW COULD BE DANGEROUS UP TO 220 YARDS
- THIS IS A HIGH POWER CROSSBOW INTENDED TO BE USED BY THOSE WHO ARE 18 YEARS OR OVER
- PLEASE READ ALL INSTRUCTIONS CAREFULLY BEFORE USING
- PURCHASERS AND USERS SHOULD CONFORM TO GOVERNMENT LAWS AND THE RESTRICTION OF THE OWNERSHIP OF CROSSBOWS
- NEVER ALLOW FINGERS/THUMB WITHIN THE STRING PATH

FOR YOUR OWN SAFETY

- EYE PROTECTION STRONGLY RECOMMENDED
- DO NOT POINT AT ANYTHING OTHER THAN YOUR INTENDED TARGET
- DO NOT LOAD YOUR CROSSBOW UNTIL YOU ARE READY TO SHOOT
- ONLY SHOOT WITH BOLTS INTENDED FOR THIS BOW
- NEVER DRY FIRE (NEVER FIRE WITHOUT AN APPROPRIATE BOLT) THIS CAN CAUSE DAMAGE TO THE PRODUCT
- USING A DAMAGED STRING OR BOLT CAN BE DANGEROUS SINCE IT MAY CAUSE FURTHER DAMAGE OR POSSIBLE INJURY TO THE USER OR OTHERS



Arrow Precision, LLC

1619 W. Washington Street
Allentown, PA 18102

Email: sales@arrow-precision.com

Tel: 610 437 7138

Fax: 610 437 7139

www.arrow-precision.com

Arrow Precision, LLC reserves the right to change all product specifications without notice.
Actual product may vary from photographs. All performance specifications are intended for guidance only.

© Arrow Precision, LLC

FLAME ASSEMBLY INSTRUCTIONS AND OWNERS MANUAL



INFERNO CROSSBOWS

Quality that speaks for itself

Flame Trek 131 v1.0

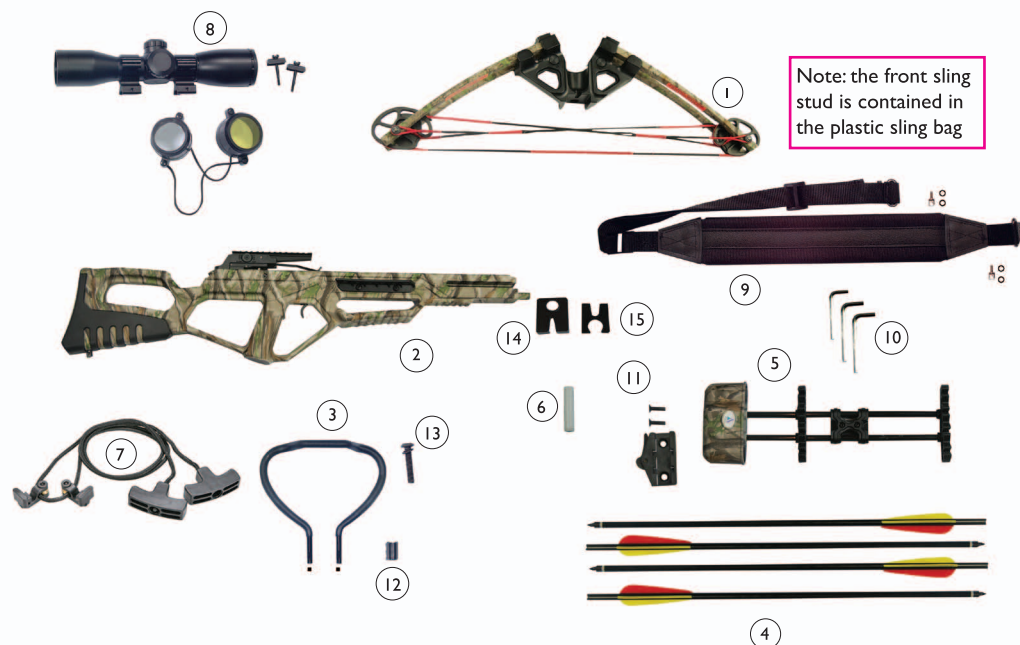
Please keep for future reference



PARTS LIST

Congratulations on your purchase of the Inferno Flame 185lb Compound Crossbow Package! Thank you for purchasing our product, we hope you have many years of enjoyment from our high quality crossbow package. This is a precision unit and should be treated with care and maintained properly for peak performance.

IMPORTANT - Please inspect your crossbow package to ensure that the following Items are included in the box.



- | | |
|---|--|
| 1. Inferno Flame 185 lb Riser Assembly | 9. Sling |
| 2. Crossbow Body (Stock, Trigger Assembly, Picatinny Style Scope Mount) | 10. Allen key Set (3) |
| 3. Foot Stirrup With Riser Assembly / Foot Stirrup Mounting Screw (1) | 11. Quiver Mount (1) Allen Head Screws (2) |
| 4. 4 x 20" Carbon Fiber Bolts With 100 Grain Practice Points | 12. Cable slide (1) |
| 5. Quick Detach Quiver | 13. Riser Assembly Mounting Screw (1) |
| 6. Rail Lube | 14. Riser Spacer (1) |
| 7. Rope Cocking Device | 15. Self Adhesive Pad (1) |
| 8. 4x32 Multi-Reticle Illuminated Scope (1) Mounting Brackets* (2) | |

*Mounting the scope requires a 7/64 Allen Key - NOT INCLUDED

IN THE UNLIKELY EVENT YOU ARE MISSING ANY OF THESE PARTS CALL ARROW PRECISION, LLC IMMEDIATELY (610) 437-7138 or Email: sales@arrow-precision.com for immediate assistance.

DO NOT RETURN THE PRODUCT TO THE PLACE OF PURCHASE, PLEASE CALL US DIRECTLY FOR SERVICE OR PARTS.

Arrow Precision, LLC Inferno Crossbows and Youth Archery Set One Year Limited Warranty

The manufacturer warrants the crossbow to be free from defects in material and workmanship under normal use and service for 1 year from date of purchase. The warranty does not cover damage resulting from abuse or misuse, repairs or alterations performed by anyone other than the manufacturer or authorized service center or damage occurring in transit. Not covered are strings, cables, and other items which require periodic replacement. Damage resulting from dry firing (firing unit without a bolt), whether intentional or accidental; including instances where the bolt is not seated properly resulting in damage to the limbs, cables, wheels, string, etc. are not covered by this warranty.

Please call us first with any warranty questions, if you are directed to return the unit it should be well packed to avoid damage in transit, including a description of the difficulty, and shipped postage prepaid to Arrow Precision, LLC once we have verified the problem we will repair or replace at no charge and return postage prepaid. For customers living outside the United States, Arrow Precision, LLC will provide standard warranty service. However, inbound & outbound shipping cost is the responsibility of the consumer. If failure was caused by misuse, alterations, accident, or abnormal conditions of operation, an estimate for repairs will be submitted for your approval prior to work being performed. Include a copy of the original sales receipt, along with the form below and mail to Arrow Precision, LLC in order to register your product and activate your warranty.

If you have questions concerning this product or warranty, contact Arrow Precision, LLC and ask for warranty assistance.

Arrow Precision, LLC
1619 W Washington Street
Allentown, PA 18102
Telephone (610) 437-7138
Fax (610) 437-7139
Email: sales@arrow-precision.com
www.arrow-precision.com

Model Name _____ Date Purchased _____

Last Name _____ First Name _____

Street Address _____

City _____ State _____ Zip Code _____

Email _____

Dealer Name _____ City _____ State _____

Price Paid _____ Intended Use _____

(hunting, target, other)

Be sure to check that the bolt is in good condition, is free from defects and is straight and true. It should lay in the flight track without any bends or other issues that would cause erratic flight of the bolt. Insert the bolt onto the flight track with the index fletching (odd colored fletching) down in the groove of the flight track as pictured.



It is **IMPERATIVE** that the bolt is seated ALL the way back with the half moon nock cradled against the string. If this is not done the string may jump or go under the bolt – which would be equivalent to dry firing the bow (Firing without a bolt – this would void your warranty and damage could occur)

FIRING THE CROSSBOW

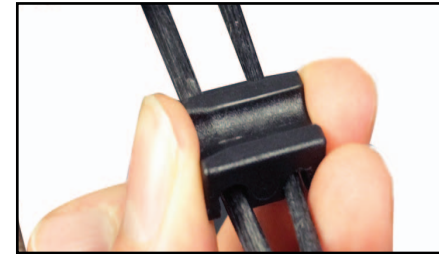
Ensure the bolt is correctly loaded and an appropriate target is in position with an adequate backstop. We recommend you start sighting in your bow at a maximum distance of 10 yards in order to be sure that your aim is

on target. Once the crossbow is sighted in at close range, further distances may be attainable.

RECOMMENDED BOLTS

The Flame crossbow includes 4 x 20" 106 carbon fiber bolts equipped with 100 grain practice points suitable for target shooting only. For hunting use the tips must be changed for proper hunting tips of the same grain weight. Both fixed and expandable broadheads may be utilized.

ASSEMBLY INSTRUCTIONS:



Step 1: Attach the cable slide to the cables as shown.

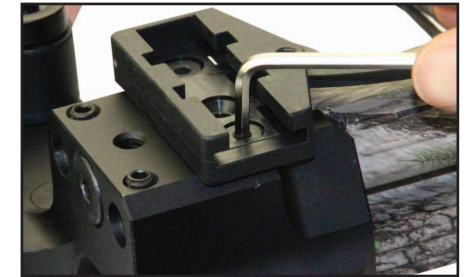


Step 2: Begin to assemble the stock and riser assembly by positioning the bow string on the top of the rail and inserting the cable slide into position inside the rail to protect the cables from undue wear. **FAILURE TO USE THE CABLE SLIDE WILL RESULT IN CABLE DAMAGE** and will not be covered by the warranty. The profile of the cable slide is designed to match the profile of the crossbow rail and will protect the cables.

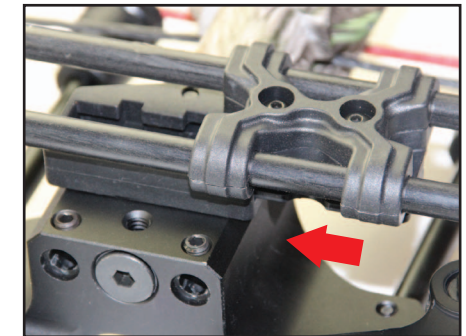


Step 3: Attach the riser assembly with the crossbow body and insert the main Riser assembly mounting screw. Attach the foot stirrup to the front of the crossbow and tighten the screws.

ATTACHING THE QUIVER:



Step 1: Screw the quick detach fitting to the quiver. This step will require a Phillips head screwdriver for completion.

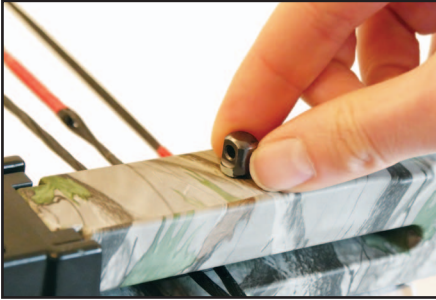


Step 2: Slide the quiver onto the bracket, pushing it all the way to the top.



Step 3: Close the latch as shown. This will lock the quiver to the bracket. Once the quiver is attached you are now ready to add bolts to the quiver.

INSTALLING THE SLING



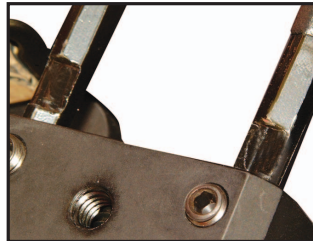
Step 1: Attach the sling stud to the front of the crossbow as shown. The sling stud is located within the sling packet. May require pliers to fully tighten.



Step 2: To attach the padded shoulder sling to the crossbow, loosen the thumb screw on the sling swivel. Locate it on the sling stud and retighten the thumb screw.

ATTACHING THE FOOT STIRRUP

Step 1: Install the foot stirrup as shown. Tighten both sides securely using the Allen Key. Please note, it may be necessary to loosen the grub screws on the riser in order to insert the foot stirrup fully into position. Tighten both of the grub screws as shown in the photo.



REPLACEMENT BATTERIES:

DURACELL DL2032, ENERGIZER ERC2032, ETC.

NOTE: Always remember to turn off the scope when you have finished using it. Always carry a replacement battery.

TAKING CARE OF YOUR 4x32 MULTI-RETICLE ILLUMINATED SCOPE

When not in use, the sight should be kept in a clean and dry place away from any corrosive material. Never try to take the scope apart or clean it internally. Send your scope to a qualified service station if it ever needs repair. The lens surface may be cleaned with a lens cloth.

A: Objective End **B:** Windage Adjustment* **C:** Elevation Adjustment*

D: Battery Compartment Cap **E:** 7- Position Rheostat Knob

F: Eyepiece **G:** Locking Nuts

* Remove the dust caps to adjust the scope



SETTING UP THE SCOPE

CAUTION: BE SURE THAT THE CROSSBOW IS NOT LOADED. PRACTICE SAFE HANDLING PROCEDURES AT ALL TIMES.

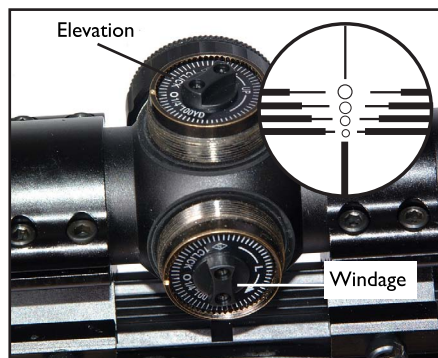
Installing a New Battery

The 4x32 multi-reticle illuminated scope is powered by one 3V lithium coin style battery, type 2032. To install the battery, unscrew the battery compartment cap on top of the rheostat knob and insert the battery (+) side up. Replace the battery cover. If the reticle dims or does not light at all, replace the battery with a fresh one.

**C A U T I O N :
SINCE ZEROING INVOLVES
THE ACTUAL SHOOT-
ING OF CROSSBOW BOLTS
- IT SHOULD BE DONE AT
AN APPROVED RANGE OR
EQUALLY SAFE AREA. BE SURE
TO USE EYE PROTECTION
WHEN SHOOTING.**

Initial Sighting

Your Flame crossbow includes a 4x32 multi-reticle illuminated crossbow scope. We suggest beginning to sight in your crossbow at no more than 10 yards to ensure that you are able to hit the target easily and to avoid loss or damage of your bolts. You will be sighting in the **TOP CIRCLE** on your scope for the shortest distance. Use an appropriate target designed for crossbows.

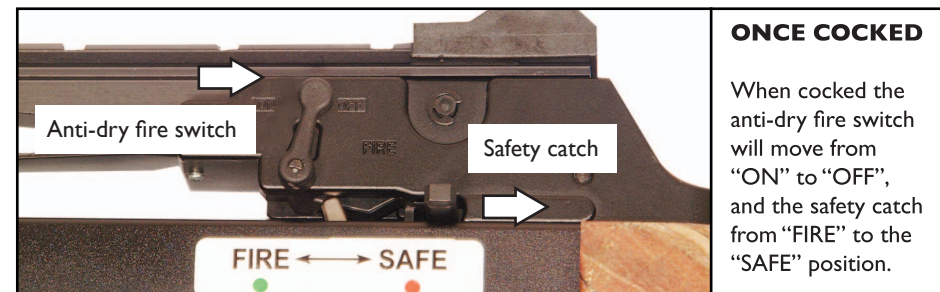


It is a good idea to use some sort of rest to ensure that you are aiming consistently. Take your first shot aiming at the center bullseye, and examine where on the target the bolt has hit.

Depending on where the shot hit you will need to adjust the windage knob (Left and right) and elevation (up and down) knob on the scope in the direction indicated on the scope adjustment knobs to make the correction. Continue repeating the process until you are zeroed in at 10 yards and then begin to move slowly further away from the target to your desired first yardage making adjustments to windage and elevation as necessary. The other circles below the top one will offer you additional yardage sight points, the lower the circle the further the distance. These distances will depend on your initial yardage sighting of the top circle, and also depend on your bolt configuration (bolt shaft length, size and weight of tip).

**CAUTION: DIRECT VIEW-
ING OF THE SUN CAN CAUSE
DAMAGE TO YOUR EYE SIGHT**

Thank you for your purchase. We wish you great success in your hunting and target shooting pursuits!



ONCE COCKED

When cocked the anti-dry fire switch will move from "ON" to "OFF", and the safety catch from "FIRE" to the "SAFE" position.

UNDERSTANDING THE ANTI DRY FIRE TRIGGER

The anti-dry fire switch will always be in the "ON" position when not cocked.

Once cocked, two actions will occur simultaneously: the anti-dry fire switch will move from "ON" to "OFF" and the safety catch will move from "FIRE" to "SAFE" automatically.

There are two ways to uncock your crossbow successfully: 1) Loading the crossbow with a bolt and shooting into an appropriate discharge target. This action will disengage the

anti-dry safety mechanism which will allow you to move the safety catch from "SAFE" to "FIRE".

2) To uncock the crossbow without the need of loading a bolt; move the anti-dry fire switch from "OFF" to the "ON" position with index finger, hold, and then move the safety catch with your thumb from "SAFE" to "FIRE". You cannot move safety catch unless the anti-dry fire switch is moved first and held for safety catch. Pull back on the string firmly enough to alleviate tension. Pull the trigger while maintaining pulling pressure on the string and gently let down to the resting position.

MAINTENANCE

- Check all fittings thoroughly every time you use the crossbow.
- Before shooting the crossbow, check that all screws and fasteners are tight as the vibration from shooting the bow may cause them to come loose.

- Lubricate the string serving and rail regularly to prevent burning and wearing out prematurely.
- If your crossbow has a problem beyond your knowledge please call Arrow Precision, LLC for advice. **Any maintenance or alterations other than those recommended by Arrow Precision to the crossbow will void your warranty.**

MOUNTING THE SCOPE



Step 1: Align the scope mount with the slots on the weaver style sight base.



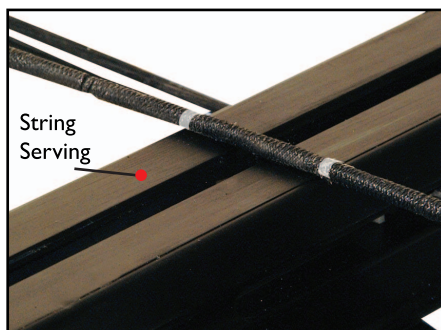
Step 2: Slide in each of mounting brackets in the desired position on the weaver style sight base.



Step 3: Tighten the locking nuts by hand. If required use an Allen key or a screw driver.

MARKING THE STRING:

In order to achieve the highest level of accuracy it is recommended that you take the time to mark your string to ensure that you are cocking the bow in a consistent manner. Due to the high draw weight involved in cocking the bow, it is easy to cock the crossbow off center. Failure to cock the crossbow squarely will result in poor accuracy. Simply mark the string with a marker or other means to visibly ensure the bow is being cocked properly.



IMPORTANT: BEFORE USE, LUBRICATE THE STRING SERVING AND RAIL. FAILURE TO DO SO WILL RESULT IN THE STRING SERVING BURNING AND WEARING OUT PREMATURELY.



COCKING THE CROSSBOW

Place the foot stirrup on the ground on a flat and stable surface. Insert your foot into the stirrup and securely hold the crossbow down to the ground with the weight of your body. Before cocking, the safety catch **MUST** be in the Fire position. Once cocked, the trigger will automatically go into the Safe mode.

Draw the string back towards the trigger mechanism, (with either the rope cocking device or your hands) ensuring the string is in contact with the flight track. The trigger latch will automatically move into the safe position when you have reached the back of the trigger housing.



ROPE COCKING DEVICE

The best way to cock the Inferno Flame crossbow is to utilize the included rope cocking device. To use the rope cocking device, drape the middle of the rope over the groove in the stock located behind the trigger mechanism/scope mount. Due to the engineering of the trigger mechanism, you must use an Arrow Precision rope cocking device (included).



Place the hooks onto the crossbow string on each side of the flight track. Once this has been accomplished hold the crossbow on a level surface using the foot stirrup grasp the molded handles and pull the string back until it latches in the trigger. Using this method, the draw weight will be reduced by 50% and the string will cock in a consistent manner each time.

WARNING DO NOT DRY FIRE THE CROSSBOW (FIRE WITH NO BOLT) DAMAGE WILL OCCUR AND VOID YOUR WARRANTY.

